

Photovoltaic connector - PV-FT-CF-C-4-130-BU - 1805151


Please be informed that the data shown in this PDF Document is generated from our Online Catalog. Please find the complete data in the user's documentation. Our General Terms of Use for Downloads are valid (<http://phoenixcontact.com/download>)



Photovoltaic connector, nominal current: 40 A, nom. voltage: 1500 V, connection method: Crimp, color: black. Can only be released using a tool

RoHS

Key Commercial Data

Packing unit	50 STK
GTIN	 4 046356 671774
GTIN	4046356671774
Weight per Piece (excluding packing)	1.890 g
Weight per piece (including packing)	11.840 g
Custom tariff number	85444290
Country of origin	Germany

Technical data

Dimensions

Fixed cable length	130 mm
External cable diameter	4.6 mm ±0.15 mm

Ambient conditions

Degree of protection (when plugged in)	IP66 / IP68 (2 m / 24 h)
Degree of protection (not plugged in)	IP65
Ambient temperature (operation)	-40 °C ... 85 °C
Ambient temperature (assembly)	-25 °C ... 50 °C

General

Design	Socket
Tightening torque nut	1.8 Nm ±0.1 Nm
Insertion force	45 N ±10 N
Disconnect force	250 N ±50 N
Pull-out force of cable >= disconnect force	> 80 N

Photovoltaic connector - PV-FT-CF-C-4-130-BU - 1805151

Technical data

General

Rated voltage	1500 V
Rated current (4.0 mm ²)	40 A
Nominal cross section	4 mm ²
Protection class	II

Material

Color	black
Insulating material	mPPE
Contact material	Cu
Contact surface material	Ag
Flammability rating according to UL 94	V0

Connection data

Connection method	Crimp
Connection capacity	4 mm ²
Contact resistance with connected conductor	0.45 mΩ
Cable type	S02

Conductor

Outer sheath, material	PE-X
External sheath, color	blue
Smallest bending radius, fixed installation	23 mm
Smallest bending radius, movable installation	46 mm

Standards and Regulations

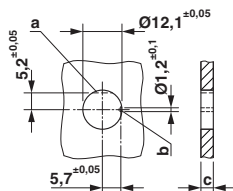
Flammability rating according to UL 94	V0
--	----

Environmental Product Compliance

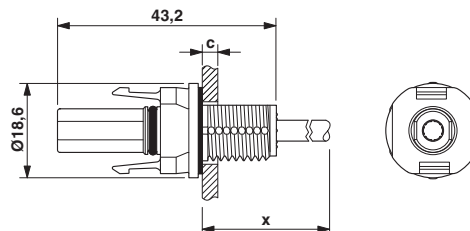
China RoHS	Environmentally friendly use period: unlimited = EFUP-e
	No hazardous substances above threshold values

Drawings

Dimensional drawing



Dimensional drawing



Dimension x = cable length
 c: panel thickness - plastic: 2 - 6 mm; metal: 2 - 5 mm

Photovoltaic connector - PV-FT-CF-C-4-130-BU - 1805151

Classifications

eCl@ss

eCl@ss 4.0	272607xx
eCl@ss 4.1	27260701
eCl@ss 5.0	27260701
eCl@ss 5.1	27260701
eCl@ss 6.0	27260704
eCl@ss 7.0	27440402
eCl@ss 8.0	27440102
eCl@ss 9.0	27440103

ETIM

ETIM 3.0	EC001121
ETIM 4.0	EC001121
ETIM 5.0	EC002635
ETIM 6.0	EC002061

UNSPSC

UNSPSC 6.01	30211810
UNSPSC 7.0901	39121409
UNSPSC 11	39121409
UNSPSC 12.01	39121409
UNSPSC 13.2	39121413

Approvals


Approvals

Approvals

VDE Zeichengenehmigung / EAC

Ex Approvals

Approval details

VDE Zeichengenehmigung		http://www.vde.com/en/Institute/OnlineService/VDE-approved-products/Pages/Online-Search.aspx	40031807
mm ² /AWG/kcmil	4.0		
Nominal current I _N	40 A		
Nominal voltage U _N	1500 V		

Photovoltaic connector - PV-FT-CF-C-4-130-BU - 1805151

Approvals

EAC



B.01742

Accessories

Accessories

Flat nut

Nut - PV-FT-C NUT BK - 1775880



Nut for securing SUNCLIX panel feed-throughs to housing. NB: This nut must always be ordered separately.

Protective cap

Protective cap - PV-C PROTECTION CAP - 1785430

Protective cap for SUNCLIX photovoltaic connector; transport protection for the mating face.

