

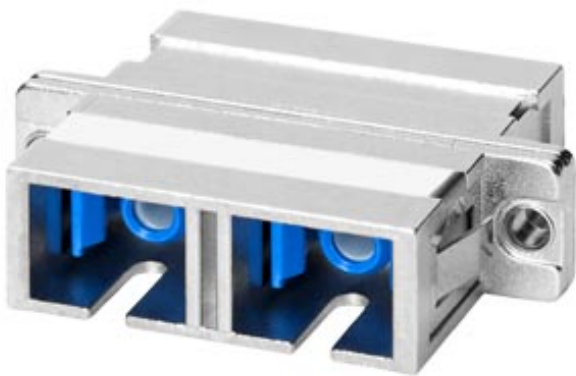
Product type designation

Product description

FC FO SC Coupler

SC duplex coupling for FastConnect assembly

FC FO SC coupler for on-site assembly with multimode fiber-optic cables Pack: 5 units



Transfer rate

Transfer rate / for Industrial Ethernet	10 Mbit/s, 100 Mbit/s, 1000 Mbit/s
Transfer rate / with PROFIBUS	9.6 kbit/s ... 12 Mbit/s

Interfaces

Number of optical interfaces / for fiber optic cable	1
Design of the optical interface / for network components or terminal equipment	SC duplex coupling
Type of electrical connection / FastConnect	Yes

Mechanical data

Material / of the enclosure	Metal and plastic
-----------------------------	-------------------

Design, dimensions and weights

Type of cable outlet	180° cable outlet
Width	9 mm
Height	35 mm
Depth	28 mm
Net weight	18 g

Ambient conditions

Ambient temperature	
• during operation	-40 ... +85 °C
• during storage	-40 ... +85 °C
• during transport	-40 ... +85 °C
Relative humidity	
• at 25 °C / without condensation / during operation / maximum	95 %
Protection class IP	IP20

Product features, product functions, product components / general

Product feature	
• silicon-free	Yes
Product component	
• strain relief	Yes

Standards, specifications, approvals

Certificate of suitability	
• RoHS conformity	Yes
• UL approval	No
• Railway application in accordance with EN 50155	No

Further information / Internet-Links

Internet-Link	
• to website: Selector SIMATIC NET SELECTION TOOL	http://www.siemens.com/snst
• to website: Industrial communication	http://www.siemens.com/simatic-net
• to website: Industry Mall	https://mall.industry.siemens.com
• to website: Information and Download Center	http://www.siemens.com/industry/infocenter
• to website: Image database	http://automation.siemens.com/bilddb
• to website: CAx Download Manager	http://www.siemens.com/cax
• to website: Industry Online Support	https://support.industry.siemens.com

last modified:

05/07/2020